


I'm not robot  reCAPTCHA

Continue

String. format lua example

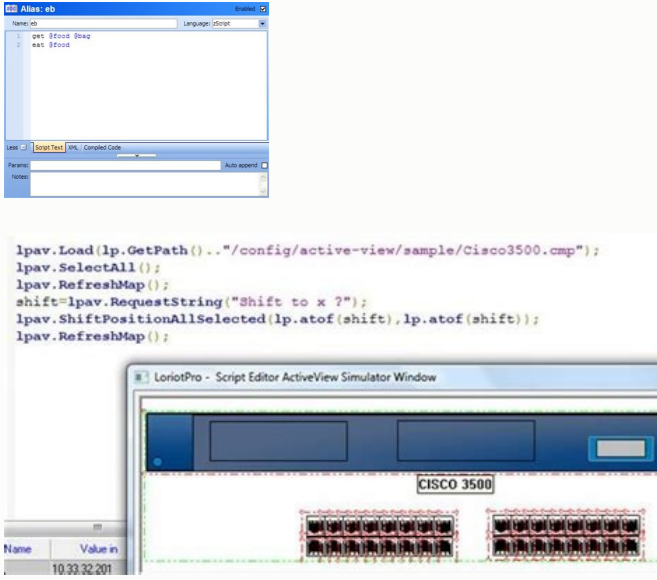
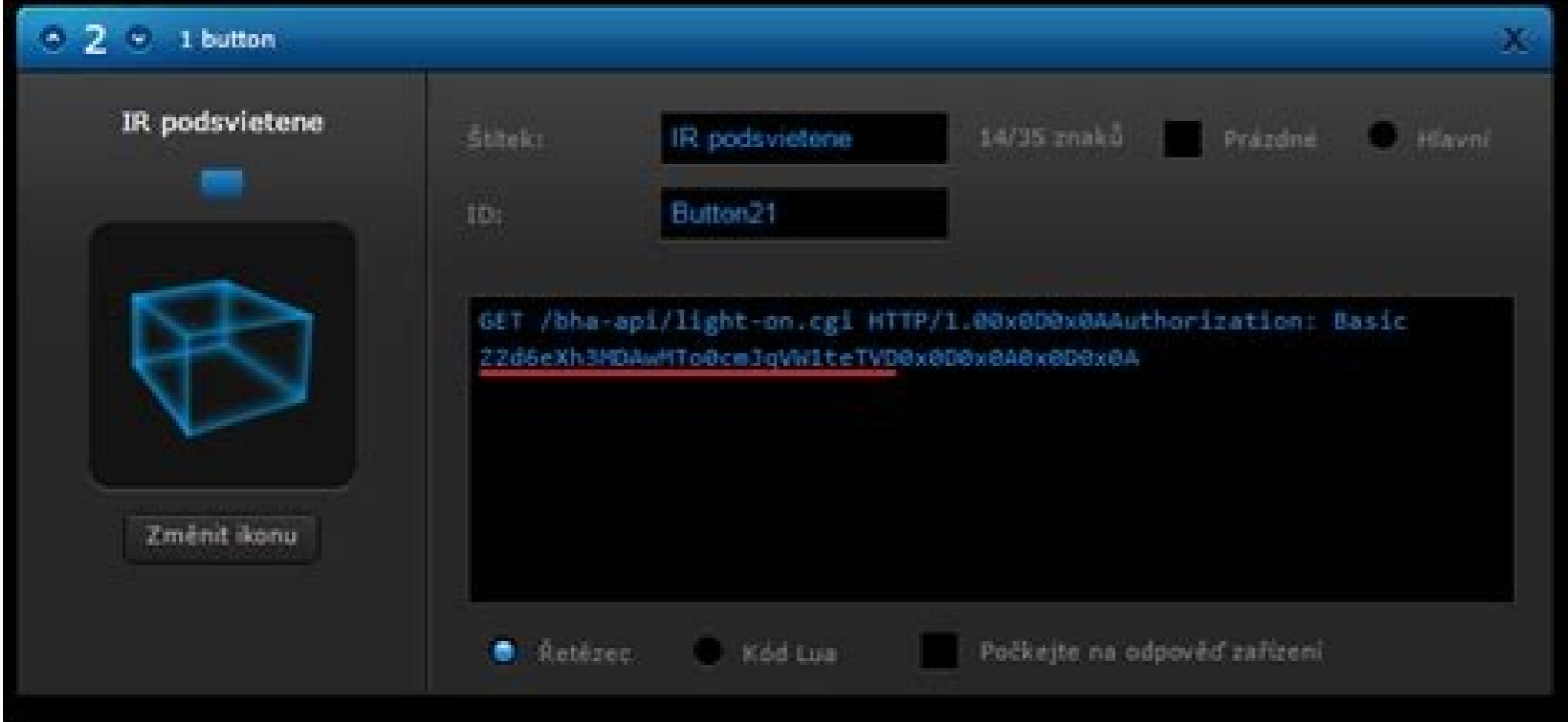
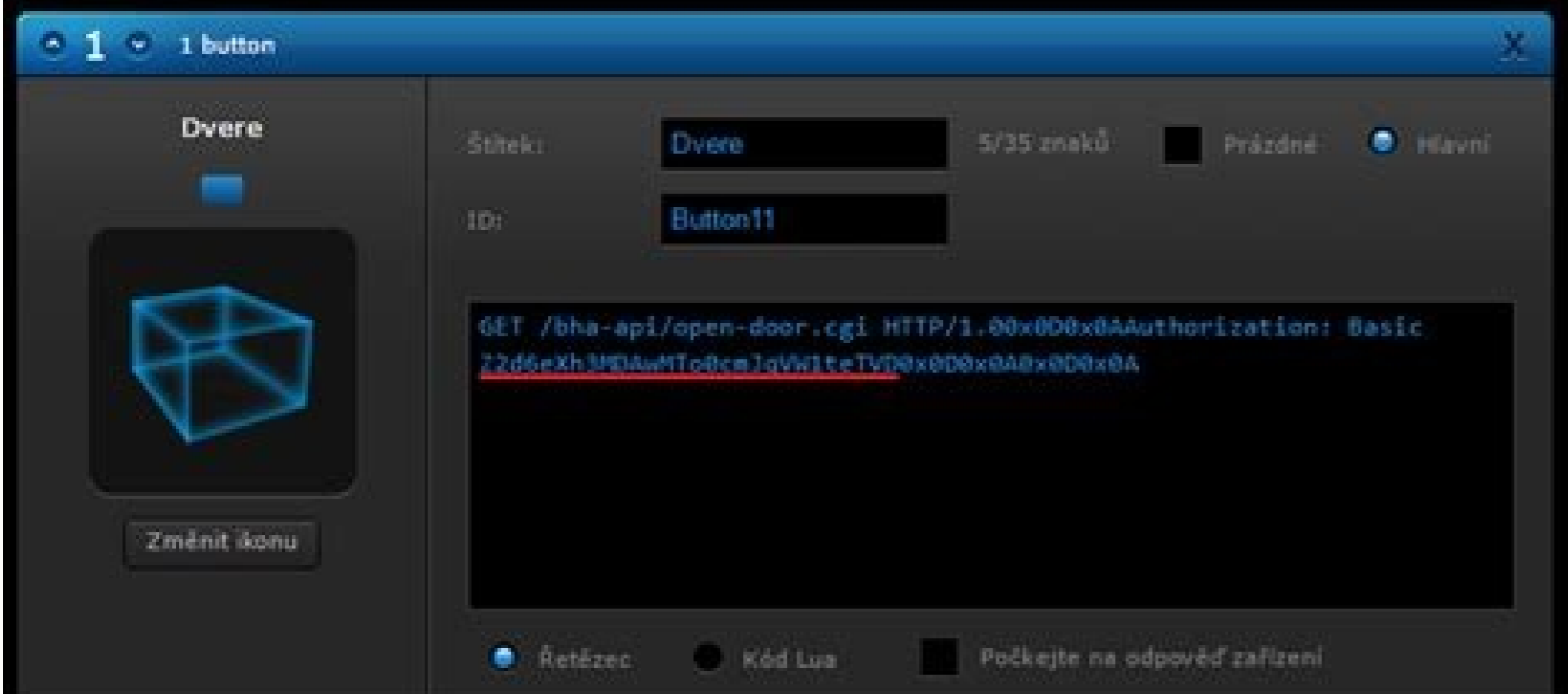
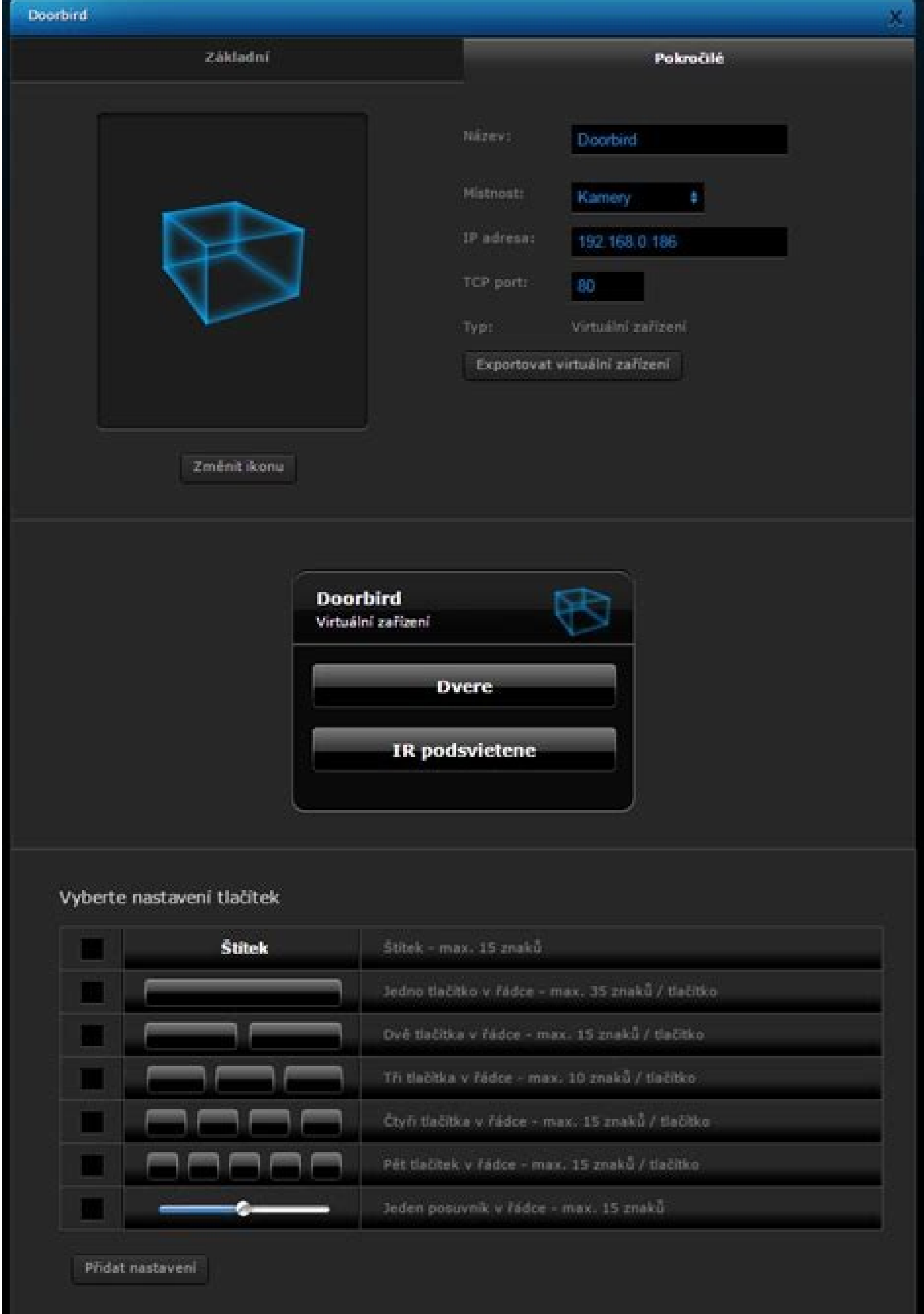
```
D:\Program\LuaInterpreter\bin\Debug\Lua.exe
Hello, Lua!
length of circle is 62.831852
500
1! = 1
2! = 2
3! = 6
4! = 24
5! = 120
[ 0 0 0 0 0 ]
[ 0 0 ]
[ 0 0 0 0 0 ]
_1_11_11_1_2_1_11_11_1_2_1_11_11_1_2_1_11_11_1_2_1_11_11_1_2
7 1
5 1
nil false 5
-----
1 nil
2 y
3 15252.25
4 45
-----
1 45
2 15252.25
3 nil
4 y
```

Namespace: VEHICLE

REQUEST_VEHICLE_RECORDING

0xAF514CABE74CBF15 0x91AFED9

```
// RequestVehicleRecording
void REQUEST_VEHICLE_RECORDING(int
i, char* name);
```



String format in lua. String.format lua example. String.pack lua example.

Use to make a timer of a shot that call {fn}. vim.in_fast_event() * vim.in_fast_event() * Returns TRUE if the code is running as part of a "Rapid" event controller, where most API is disabled. CODE: Min (A 0, B 1) IF (A 0 ~]) Print (vim.inspect (vim.opt.listchars: Get ())) {space = " ", tab = "> ~"}, for char, representation in Print (char, ">"), representation) End for values that are lists of flags, a set will be returned with the flags such as the keys and 'true' as entries. A {index} in the middle of a UTF-16 sequence is rounded up until the end of that sequence. If you want to delete some routes from there, you can configure 'RuntimePath' to activate an update: Let & RunCimePath = & RunCimePath = and RunCimePath - Skip the 'RuntimePath' routes that contain point and coma applies to 'package.path' and 'Package.cpath' Vim: nil * vim.nil * Special value representing NIL IN RPC | and | V: null | In the VIMScript conversion, and similar cases. Examples :: Lauado Return Cadena.Format ("% S % T% D", Line: Inverse (0, #Line)); Lua requires "LPEG"; Lua - Paris Balanced Gramatic -: Lua BP = LPEG.P [{" (1 - lpeg.s (0) + lpeg.v (1) ^ 0 *) ^ 0 * }]; LUAADO SI BP: Match (line) Then it returns "-> { " - Parameters: {S} (string) A chain (prefix) (string) A prefix return: (Boolean) True SI - prefix is a prefix s tbl add reverse lookup (to)) * Vim: tbl add reverse lookup (0) * AA ± add the reverse search values to an existing table. UserData and threads are not copied and thus thrown out. The second contains a point and comma, which is a road separator, so it is outside, leaving only ' / foo / bar ' and ' / ABC ', in order. If the paste is "transmitted", 'phase' indicates the flow state:" 1: starts the paste (exactly once) "2: Continue the paste (zero or more times)" 3: The paste ends (exactly ONCE) RETURN: FALSE If the client must cancel the paste. Similar to the VIMScript function | SpellBadword (0), Consider calling this with | nvim_buf_call (0) |. The |; source | and |; execution time | Commands They can run the Lua scripts, as well as the VIM scripts. Lua is a programming language that is used to write and recognize programmers The help of incorporated functions such as Lua's printing. Expression V: Lua.somemod.func (args) is equivalent to the return of Lua Chunk somemod.func (...). In addition, you can access the functions of the packages. packages. ARG2) V: LUA.REQUIRE:MYPACK.SUBMOD.FUNC (ARG1, ARG2) NOTE: Only the unique quote form without PaRENS is allowed. vim.tbl_count ({a = 1, b = 2}) => 2 vim.tbl_count ({1, 2}) => 2 Parameters: {T} Return Table: Number that is the number of value in the table . See: tbl_deep_extend ((behavior), {...}) * vim.tbl_deep_extend (0) * merge recursively two or more MAP- as tables see | Lua-special:tbl | for more details. Use to make a timer of a shot that calls 'Fn' NOTE: {fn} is | SWORK WRAP | Ped automatically, so API functions are safe to call. The NO key is an error. A € Å € Default (string | nvl) Regarding predetermined to the entry A € ~ € Finishing (string | nvl) Specifies the type of completion compatible with the input. Parameters: {s} (chain) A chain (suffix) (string) A suffix Return: (Boolean) True if 'Suffix' is a suffix of S GSPLIT (S), {SEP}, {Plain}) * VIM. GSPLIT (0 Splits A string in each instance of a separator. Pasta (lines), {phase}) * vim.paste (0) * Stuck the controller, invoked by | nvim_paste (0) | When a UI according to the TUI | TUI |) Paste a text in the editor. To call Autoload's functions, use the syntax: vim.fn [some functions #] [(, ...)] Unlike Vim.Api. | NVIM CALL_ Funcia 'N (0) | This is converted directly between VIM objects and Lua objects. Parameters: {function} Callable Table or Table {T} Table TBL Values å € ERROR ('ARG1: Expected table, Got number') vim.Validate (ARG1 = {3, FUNCTION (A) RETURN (A% 2) = = 0 END, 'A Number of Par'}) => Error ('ARG1: Expected Number, obtained 3') If several types are valid, they can be given as a list. Suppose there is a scenario in which the function wants to print sentences and then, in that case, will mainly consider the type of chain data as a parameter. Note: This Muta DST! Parameters: {DST} list that will be modified and added. Return 'nil' if the key does not exist. It currently contains pairs for types 'float', 'matrix' and 'Dictionary'. *: Luxurued *: Luxurued *: [Rank] Luxurued {BODY} executes the lua chunk "(line, linern) function for each damping line in [Range], where ' Line ' is the current line text (without), and ' Linern ' is the current line number. RETURN: Name Name space ID associated with (FN). The LUA modules can be loaded with ' Require ('name)', which conventionally returns a table but can return any value. For example, if 'runtimepath' is ' foo, bar ' and ' pack.cpath ' it was ' ./? Load the first module Found: FOO / LUA / MOD.LAA FOO / LUA / MOD / INIT.LAA Bar / LUA / MOD.LAA BAR / LUA / MOD / INIT.LAA FOO / LUA / MOD.OSO FOO / LUA / MOD.dll Bar / LUA / MOD.SO BAR / LUA / MOD.DLL * LUA-PAKAGE-PATH * NVIM automatically adjusts 'pack.path' and 'CPATH' according to the effective value 'RuntimePath'. The Global Magic " A " contains the second argument to Luaeval (0). Parameters: {T} Table Return: List of TBL_MAP ({FUNT}), {T}) * VIM:TBL_MAP (0) * Apply a function to all the values of a table. Without ' vim.type_idx ' key tables with keys that are not adjusted to 1., 2. The suffix of / def /?. So ', namely, ' /?. So ' is unique, since it is the same as the suffix of the first road of 'package.path' (I.E. './?. SO').

